

ACCULTURATIVE CHANGE IN SOUTHERN MEXICO

**Randal G. Tonks, Camosun
College, Victoria, B.C.**

Abstract

- An ethnographic account of acculturative pressures and outcomes among the peoples of South-Eastern Mexico is presented. This account makes use of participant observations, key-informant interviews and archival analyses in examining cultural changes among three primary groups: indigenous peoples, naturalized immigrants and international sojourners. Beginning with an historical overview, this account discusses various collective pressures and resolutions to the ongoing interchange of cultural values and practices. The communities and individuals under consideration are situated in a variety of social and ecological contexts, including: modern and colonial cities, historical ruins, as well as rural villages along the developing natural frontiers of the region. Issues examined include those regarding employment, cultural products and activities, relationship to nature, spirituality and healing. An overview of acculturative pressures for the people of this region is provided while considering the global / cross-cultural implications of this diverse sample of acculturative experiences.

Overview

- Introduction
- Historical Context
- Regionalism
- Economics
- Peoples
- Summary and Implications

I - Introduction

- Acculturation - varieties
- Methods – types and styles
- Settings – Regions and issues
- Sketches – narratives and examples

Acculturation

- Redfield
- Mainly Broad Scope with some specific details

II - Methods & Scope

- Archival - Books
 - Museum records
 - Geographic traces
- Key Informants
 - Interviews
 - Everyday Interactions
- Ethnographic
 - Observations and interpretations
(vs. Malinowski's time)

III - Peoples

- Local indigenous peoples (Mayan, Lacadon)
- Settled (historical) immigrants
- Sojourners (Vacationers, Business)
- Retirement settlers (Snowbirds)

History

- Classical – Mayan Migration
- Colonization – The Spanish wave
- Revolutions – The Backlash
- Tourism – The Global waves

Economics

- Relationship with Nature
- Local Economic changes
- Impact of Global Economy
- Borderland Economic Regions
- Black Market & Human Smuggling
- Oil

Resort Development

- Replacing Agriculture and hacendas?
- Mangroves
- Fishing
- Eco Tourism

Acculturative Styles

- Assimilation (& deculturation)
- Separation
- Integration
- Marginalization?

Regional Exemplars

- QR
- Yucatan
- Campeche
- Tobbasco
- Chiapis
- Frontera

QR

Yucatan

Gulf of Mexico





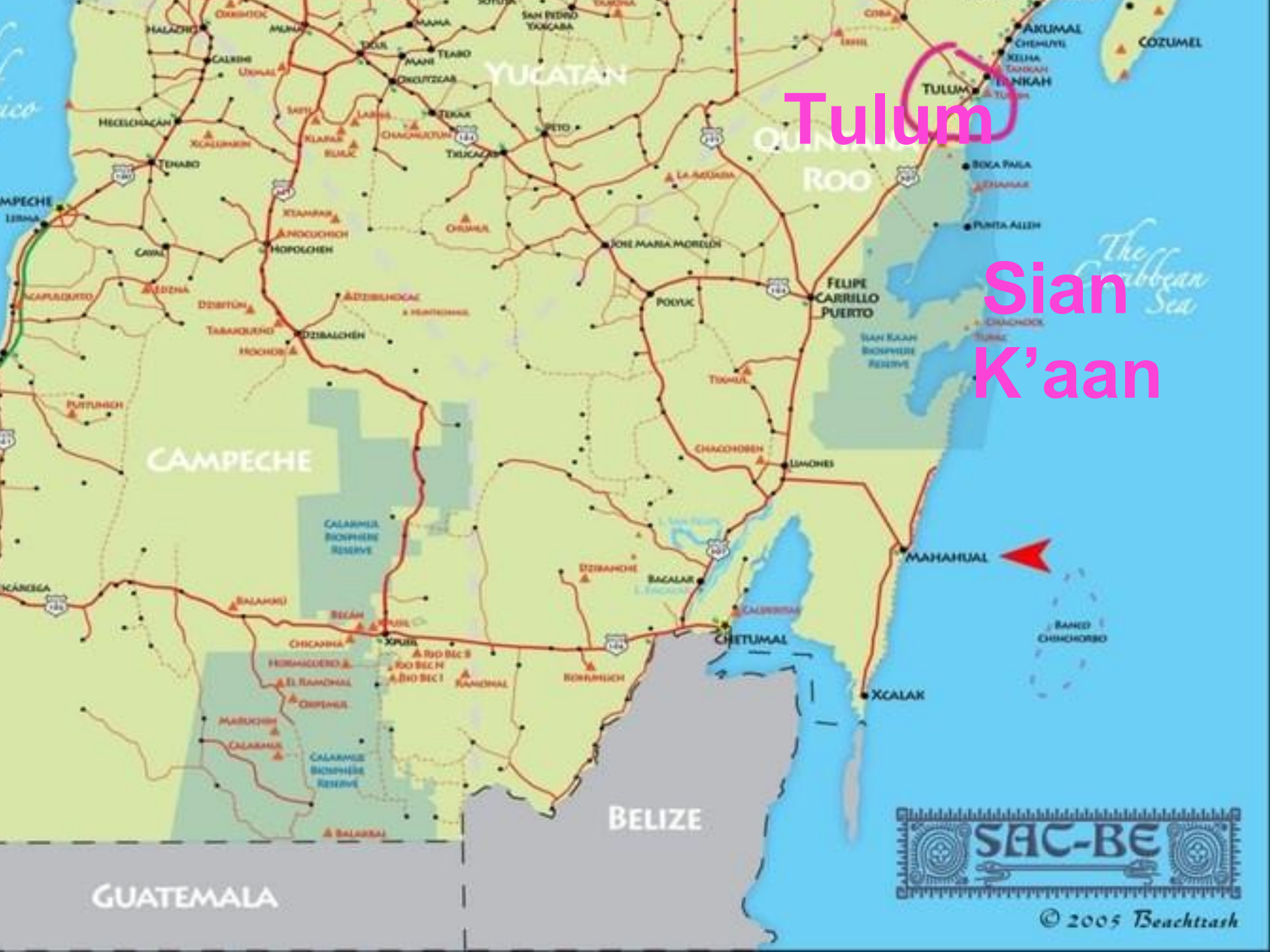
Cancun



Gulf of Mexico

The Caribbean Sea





Tulum

Sian K'aan



Tulum

- Massive Growth of hotels and resorts
- Many Beautiful Cenotes and Caves
- Eco-Tourism is growing
- Bustling City where there was almost nothing only 10 years prior
- Ocean access is limited to locals





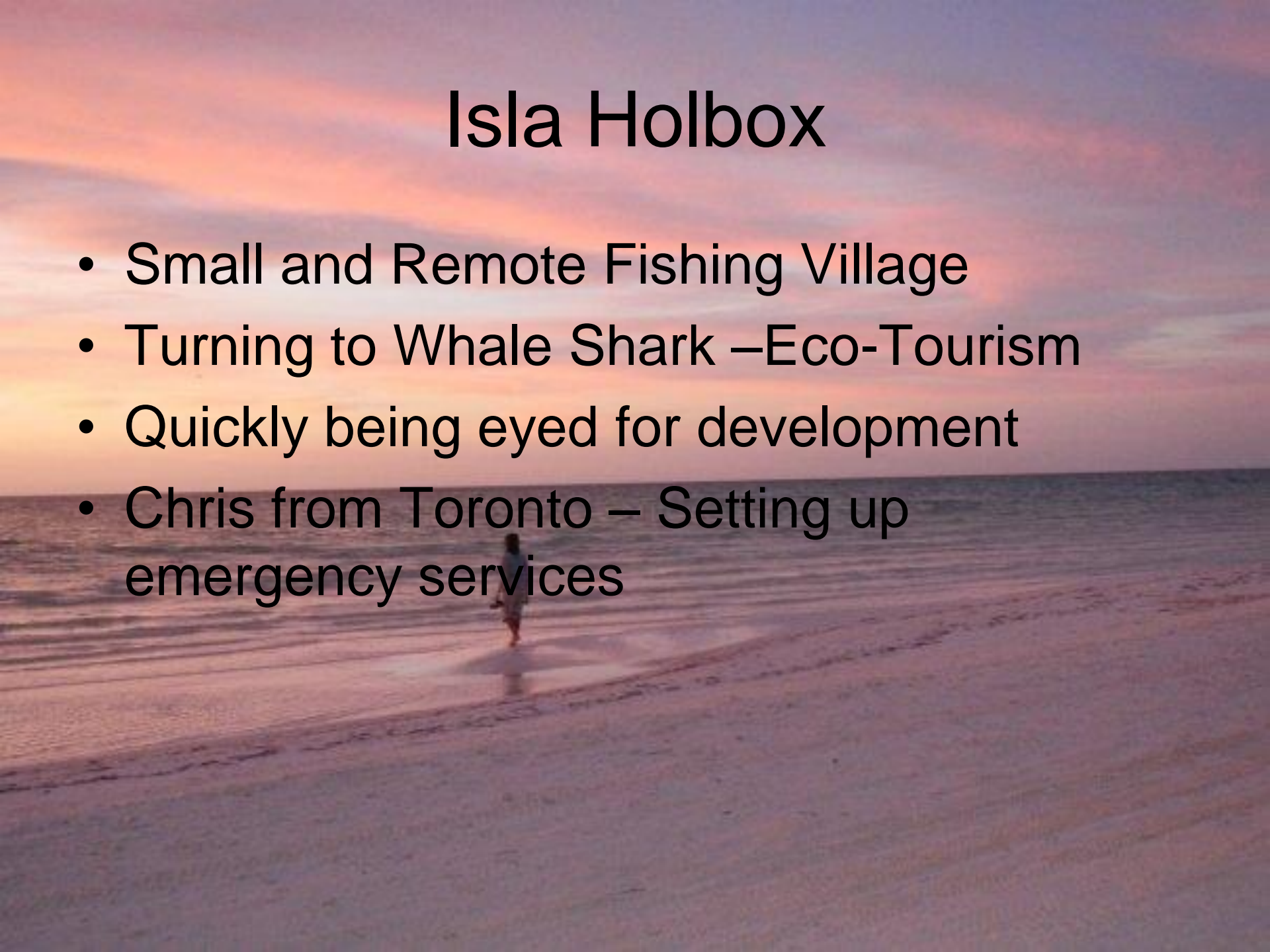


Isla Holbox



Isla Holbox

- Small and Remote Fishing Village
- Turning to Whale Shark –Eco-Tourism
- Quickly being eyed for development
- Chris from Toronto – Setting up emergency services



Whale Sharks







Merida



Merida

- Last hold out during Colonial War
- Vibrant big city with many cultural sites nearby
- Called the “Paris of the Yucatan”
- Several Universities and reportedly more PhDs than anywhere in Mexico
- Many Excellent Museums
- Weather hovers around 35-40 degrees









REGALOS GOMER

EL CENTRO - EL CENAL

Person in pink shirt walking on the sidewalk.

Person in white shirt walking on the sidewalk.



Universidad Marista de Merida

- Catholic University
- Spanish Language program
- Cultural Studies program
- Sustainable Indigenous Agriculture



Gardens with Traditional Mayan Plants





Integrated Species Habitats









Label on the cage with illegible text.



Mayan Honey Bees





Gulf of Mexico



Campeche

CAMPECHE

YUCATAN

QUINTANA ROO

MAHAHUAL

Campeche

- World Historic Site
- History of Walled City to keep out Pirates







Tobbasco

- Map?

Villahermosa

- Major Tobasco Oil City
- Home of several large Zoos
- Impressive outdoor museum of Olmak Culture
- Lowland banana country









Palenque

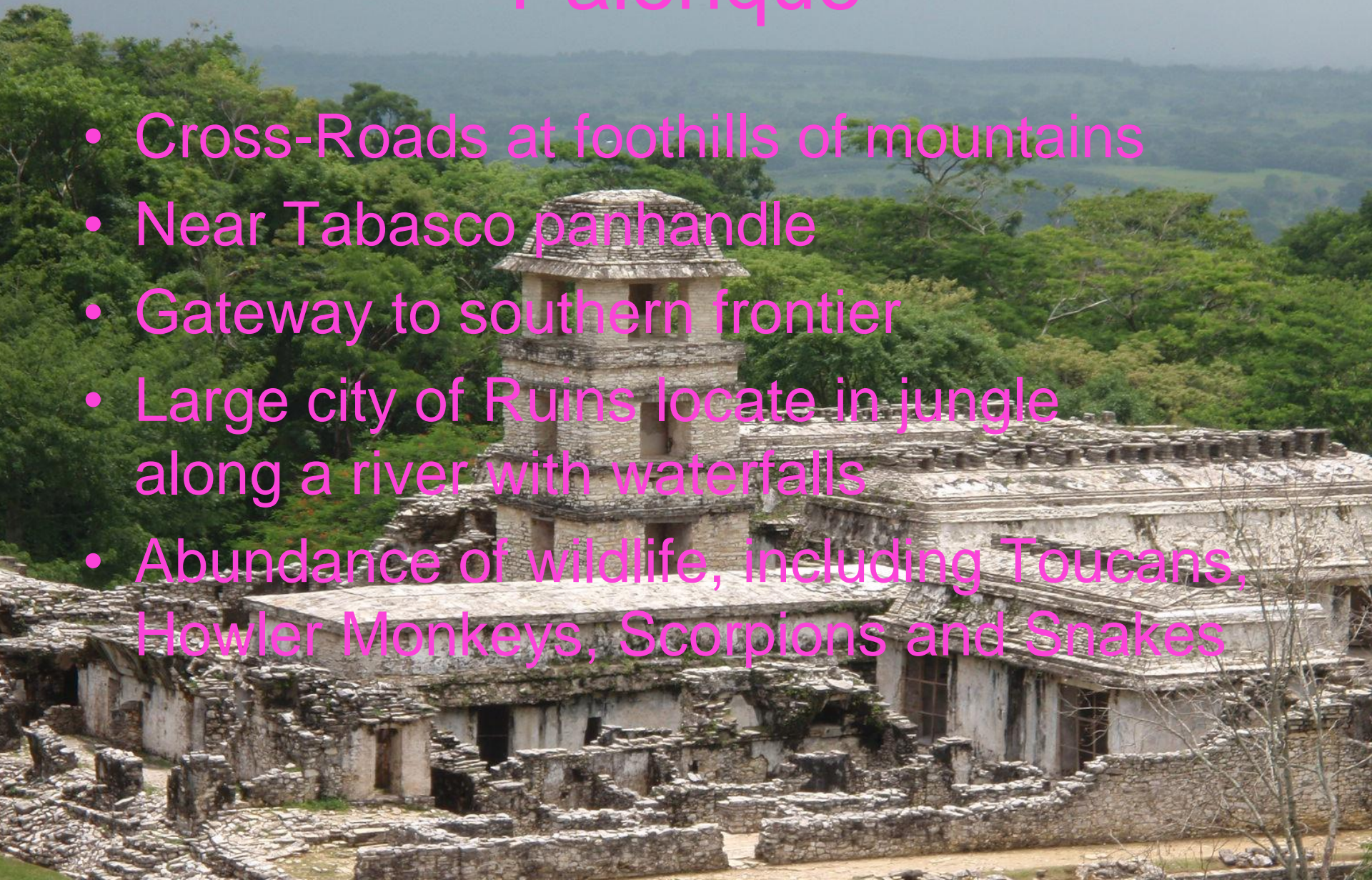
CARIBBEAN SEA

PACIFIC OCEAN

Canal de Panamá

Palenque

- Cross-Roads at foothills of mountains
- Near Tabasco panhandle
- Gateway to southern frontier
- Large city of Ruins locate in jungle along a river with waterfalls
- Abundance of wildlife, including Toucans, Howler Monkeys, Scorpions and Snakes











Tuxtla Guetierrez





San Cristobal de Las Casas

San Cristobal

- High Mountain Cross-roads
- Trade centre for many villagers & travellers
- Centre of Mayan Culture
- Museum of Mayan Medicine
- Museum of Anthropologist / Explorer Frans Blom
- Centre of Amber production and Art





Mayan Medicine



Museum of Mayan Medicine & Botanical Gardens



CHULIBET

N.C. *Lantana camara* L.

Uso: *Diarrea.*

Se Usa: *Hoja, tallo y flor.*



Bonampak



EMILIANO
ZAPATA
VALLE

EMILIANO

ZAPATA

VALLE

Bonampak

- Cararerra Frontera – Zapatistas
- Some of the last to be changed by acculturation
- Lacadon Mayan
- Selva Lacadon
- Eco Tourism



















Calakmul

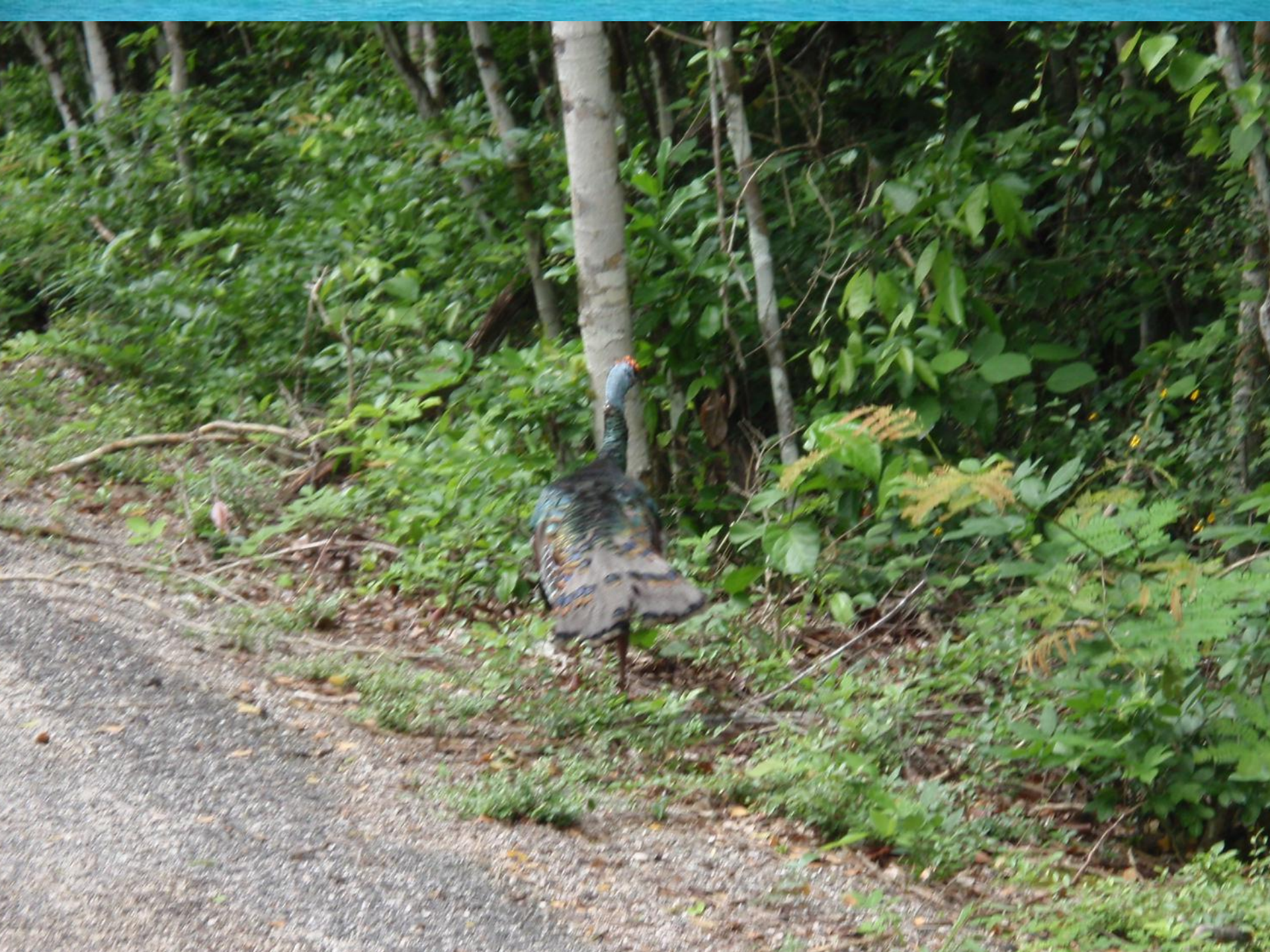
CAMPECHE

BELIZE

GUATEMALA











Summary & Implications

